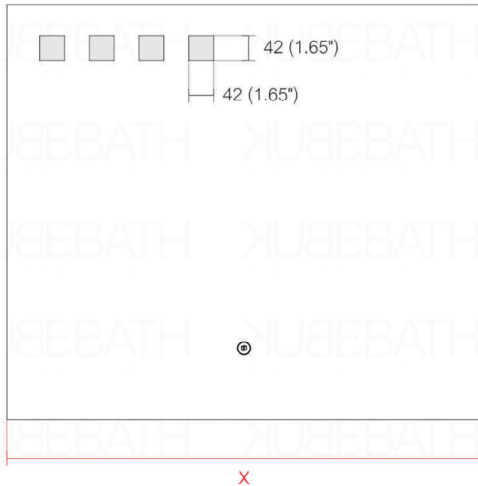
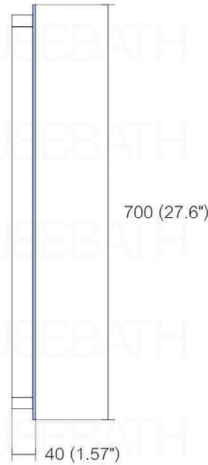


The **Kube Pixel** LED Mirror features a sensor on/off switch, LED strip all around plus four frosted glass squares for additional light. All KubeBath LED mirrors are made with the highest quality components. The LED strips have an average lifetime of 50,000 hours, making them almost maintenance free.

FRONT VIEW



SIDE VIEW



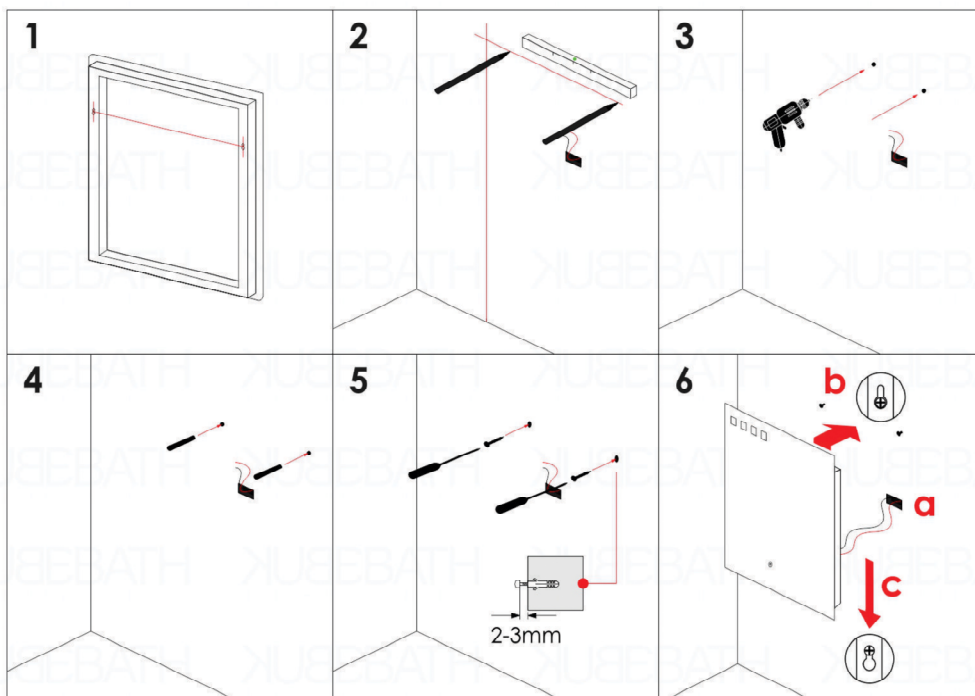
TOP VIEW



SKU	Width x Depth x Height
	Inches
LEDKP24	23.6 x 1.57 x 27.6
LEDKP30	29.5 x 1.57 x 27.6
LEDKP36	35.4 x 1.57 x 27.6
LEDKP40	39.4 x 1.57 x 27.6
LEDKP48	47.2 x 1.57 x 27.6
LEDKP60	59" x 1.57 x 27.6

SKU	Width x Depth x Height
	mm
LEDKP24	600 x 40 x 700
LEDKP30	750 x 40 x 700
LEDKP36	900 x 40 x 700
LEDKP40	1000 x 40 x 700
LEDKP48	1200 x 40 x 700
LEDKP60	1500 x 40 x 700

NOTE: DIMENSIONS AND TECHNICAL DETAILS ARE SUBJECT TO CHANGE WITHOUT NOTICE



REMOVE THE COVER AND CONNECT TO THE POWER SUPPLY



The LED Driver inside the enclosed Icon mirror has already converted the electric to 110 volts. You can connect the wires that are coming out of the center of the back of the mirror directly to your electrical connection box. The Icon wires get connected to your 110 Volt electric box that you should have placed in the wall, behind where your Icon Mirror will be mounted. It doesn't have to be exactly in the center as the lead wire gives you flexibility in the placement. However we suggest you place it somewhere towards the center.